

TOSHIBA



ENERGY SAVER

NEOBALL Z

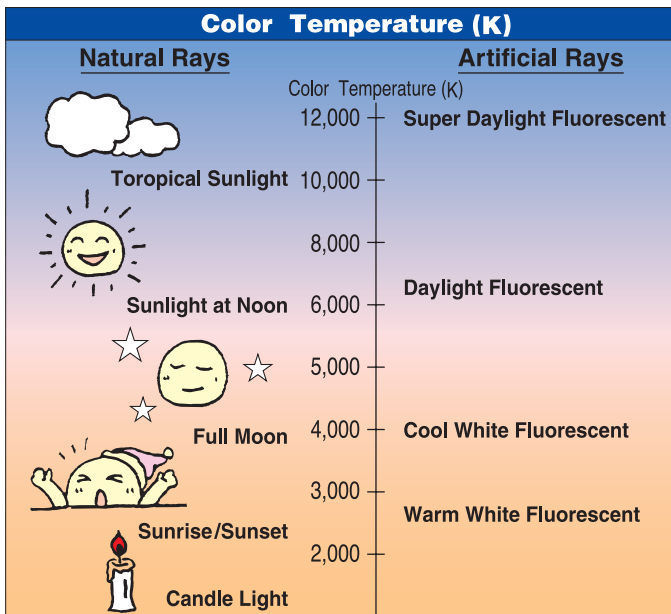
TOSHIBA LIGHTING & TECHNOLOGY CORPORATION
TOKYO, JAPAN

Made in Japan

**NEW
TRENDY
in COLOR**

SUPER DAYLIGHT

Color Temperature
12,000K



Features of TOSHIBA "SUPER DAYLIGHT"

Fresh light with an overflowing cool-rays.
You can create a fresh space with Super Daylight under the color temperature at 12,000 kelvin.



Made in Japan

ENERGY SAVER NEOBALL Z

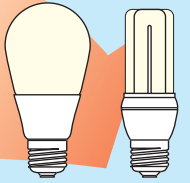
1

Energy saving by **80%**^{※1}



Energy Cost

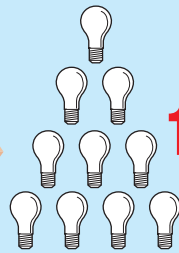
Only **1/5**^{※2}



NEOBALL Z

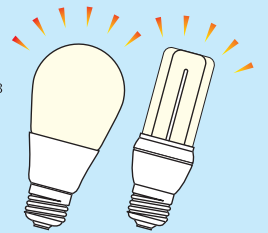
2

Durability, **10** times longer than incandescent lamps



Incandescent Lamps

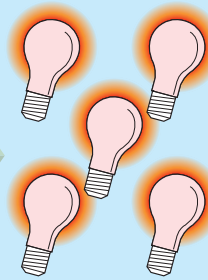
10,000HRS^{※3}



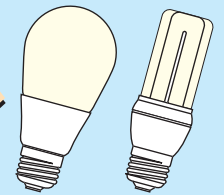
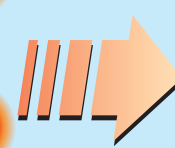
NEOBALL Z

3

Only **20%**^{※4} heat-generation
Reduced lamp heat helps air-conditioner more efficient.



Incandescent Lamps



NEOBALL Z

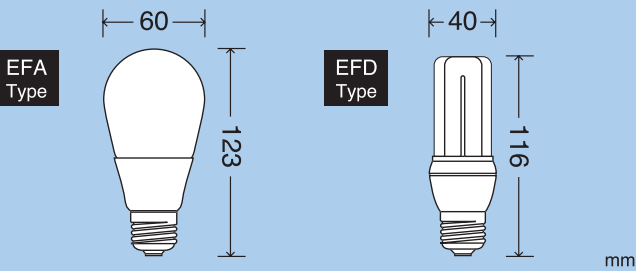
※1 Reduced 75% for 22W type NEOBALL Z.

※2 1/4 for 22W type NEOBALL Z.

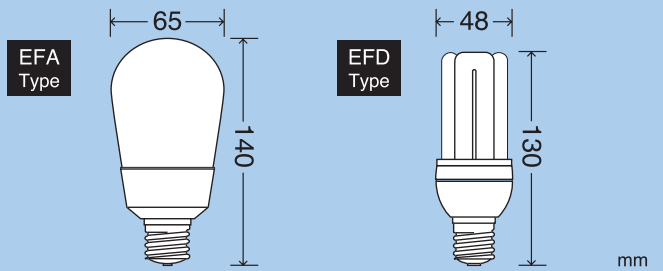
※3 Average 7years life, at 4hours a day.

※4 25% for 22W type NEOBALL Z

Figures of 12W type (Normal incandescent,60W lamp.)



Figures of 22W type (Normal incandescent,100W lamp.)



Easy Installation

Can be used anywhere you'd find an incandescent bulb.



Vanity Lamp



Down light



Wall Lamp

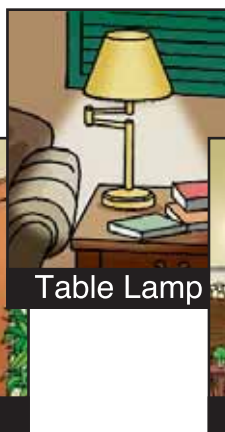
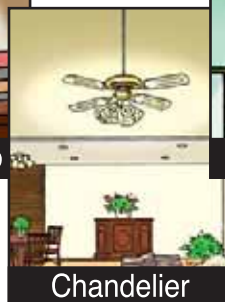


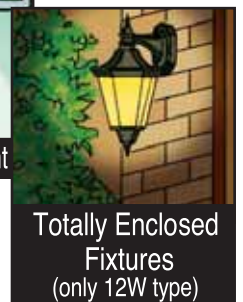
Table Lamp



Chandelier


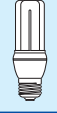

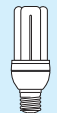


Hanging Pendant







Totally Enclosed Fixtures (only 12W type)

110/127V TYPE

Product Order Code	Lamp Shape	Color Temperature(K)	Watts (W)	Bulb Dia (mm)	Overall Length (mm)	Base	Supply Voltage (V)	Frequency (Hz)	Initial Lumens (lm)	Average Life (h)	Std.Pkg.Q'ty	Color Rendering Index(Ra)	Color Description
12W Type													
EFA12L/828-1		2,800	12	60	123	E27	110/127	50/60	810	10,000	10	84	3-Band Warm White
EFA12CW/840-1		4,000	12	60	123	E27	110/127	50/60	780	10,000	10	84	3-Band Cool White
EFA12D/867-1		6,700	12	60	123	E27	110/127	50/60	730	10,000	10	84	3-Band Daylight
EFA12D/812K-1		12,000	12	60	123	E27	110/127	50/60	600	10,000	10	84	3-Band Super Daylight
EFD12L/828-1		2,800	12	40	116	E27	110/127	50/60	810	10,000	10	84	3-Band Warm White
EFD12CW/840-1		4,000	12	40	116	E27	110/127	50/60	780	10,000	10	84	3-Band Cool White
EFD12D/867-1		6,700	12	40	116	E27	110/127	50/60	730	10,000	10	84	3-Band Daylight
EFD12D/812K-1		12,000	12	40	116	E27	110/127	50/60	600	10,000	10	84	3-Band Super Daylight
22W Type													
EFA22L/828-1		2,800	22	65	140	E27	110/127	50/60	1,400	10,000	10	84	3-Band Warm White
EFA22CW/840-1		4,000	22	65	140	E27	110/127	50/60	1,340	10,000	10	84	3-Band Cool White
EFA22D/867-1		6,700	22	65	140	E27	110/127	50/60	1,260	10,000	10	84	3-Band Daylight
EFA22D/812K-1		12,000	22	65	140	E27	110/127	50/60	1,000	10,000	10	84	3-Band Super Daylight
EFD22L/828-1		2,800	22	48	130	E27	110/127	50/60	1,420	10,000	10	84	3-Band Warm White
EFD22CW/840-1		4,000	22	48	130	E27	110/127	50/60	1,360	10,000	10	84	3-Band Cool White
EFD22D/867-1		6,700	22	48	130	E27	110/127	50/60	1,280	10,000	10	84	3-Band Daylight
EFD22D/812K-1		12,000	22	48	130	E27	110/127	50/60	1,020	10,000	10	84	3-Band Super Daylight

220/240V TYPE

Product Order Code	Lamp Shape	Color Temperature(K)	Watts (W)	Bulb Dia (mm)	Overall Length (mm)	Base	Supply Voltage (V)	Frequency (Hz)	Initial Lumens (lm)	Average Life (h)	Std.Pkg.Q'ty	Color Rendering Index(Ra)	Color Description
12W Type													
EFA12L/828-2		2,800	12	60	123	E27	220/240	50/60	810	10,000	10	84	3-Band Warm White
EFA12CW/840-2		4,000	12	60	123	E27	220/240	50/60	780	10,000	10	84	3-Band Cool White
EFA12D/867-2		6,700	12	60	123	E27	220/240	50/60	730	10,000	10	84	3-Band Daylight
EFA12D/812K-2		12,000	12	60	123	E27	220/240	50/60	600	10,000	10	84	3-Band Super Daylight
EFD12L/828-2		2,800	12	40	116	E27	220/240	50/60	810	10,000	10	84	3-Band Warm White
EFD12CW/840-2		4,000	12	40	116	E27	220/240	50/60	780	10,000	10	84	3-Band Cool White
EFD12D/867-2		6,700	12	40	116	E27	220/240	50/60	730	10,000	10	84	3-Band Daylight
EFD12D/812K-2		12,000	12	40	116	E27	220/240	50/60	600	10,000	10	84	3-Band Super Daylight
22W Type													
EFA22L/828-2		2,800	22	65	140	E27	220/240	50/60	1,400	10,000	10	84	3-Band Warm White
EFA22CW/840-2		4,000	22	65	140	E27	220/240	50/60	1,340	10,000	10	84	3-Band Cool White
EFA22D/867-2		6,700	22	65	140	E27	220/240	50/60	1,260	10,000	10	84	3-Band Daylight
EFA22D/812K-2		12,000	22	65	140	E27	220/240	50/60	1,000	10,000	10	84	3-Band Super Daylight
EFD22L/828-2		2,800	22	48	130	E27	220/240	50/60	1,420	10,000	10	84	3-Band Warm White
EFD22CW/840-2		4,000	22	48	130	E27	220/240	50/60	1,360	10,000	10	84	3-Band Cool White
EFD22D/867-2		6,700	22	48	130	E27	220/240	50/60	1,280	10,000	10	84	3-Band Daylight
EFD22D/812K-2		12,000	22	48	130	E27	220/240	50/60	1,020	10,000	10	84	3-Band Super Daylight

Caution for Usage

- Enclosed fixture required for outdoor use.
- Do not use at places where exposed to weather.
- Lamp requires a short warm up period to reach full light output.
- Do not use on emergency exit fixtures.
- Do not use 22W type NEOBALL Z in totally enclosed recessed fixtures.
- Do not use 22W type NEOBALL Z in down light fixtures with heat insulations.

Caution for safety

- Not for use on dimming circuits; May not work with some electronic timers, photocells.
- Never disassemble or modify the bulb.
- Install or remove the bulb from fixture by holding plastic base.

Notes

- This product may cause interference with radios, televisions, wireless telephones and remote controls. Avoid placing this product near these devices. If interference occurs, move the product away from the device or plug into different outlet.

TOSHIBA LIGHTING & TECHNOLOGY CORPORATION

The appearance and specifications are subject to change for improvement without notice.
The color of the merchandise may be slightly different from that of the item in the catalogue.